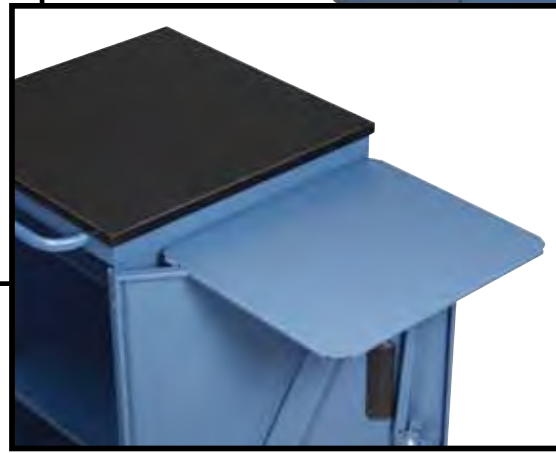


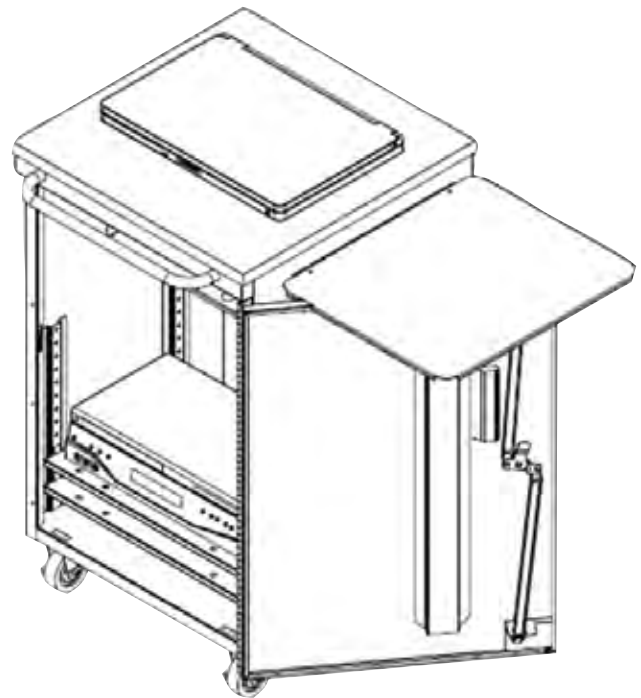
Economy Media Cart

Introducing the newest media cart, the Economy Media Cart (EMC). This cart is designed to store, transport and charge your valuable AV equipment while not draining the budget. This cart allows your school to purchase less AV equipment and share between several classes.



- Cart features key lock to secure both the front and rear projector door.
- Flip up side shelf provides additional work surface.
- Laminate top provides smooth writing surface as well as furniture appearance.
- Adjustable shelf inside allows for reconfiguration as equipment changes.
- Ships fully assembled.
- Available in Tech Blue (T42) paint and Black (L26) laminate.

Economy Media Cart Specifications



INTRODUCTION

The Economy Media Cart (EMC) has been designed by teachers and IT Directors to create an economically priced media solution. The EMC allows a school to transform several areas in their facility such as the library, conference room, cafeteria and gymnasium into a presentation center while not investing in audio visual equipment for each area.

CONSTRUCTION

EMC Body

- Interior space from bottom of cart to bottom of projector shelf:
18"W x 15-1/2"D x 18"H
- Interior space on projector shelf:
18"W x 11-1/2"D x 9-1/4"H
- Constructed of a combination of 16, 18 and 20 gauge CRS.
- Cart features a welded construction providing high quality performance.
- Includes (2) 3" swivel foot brake casters and (2) 3" rigid casters. Carts can be upgraded to 5" casters. Field installation only.
- (1) Three point lock on both the front and rear projector doors limit access to valuable electronics. Both doors are keyed alike.
- The front door features a welded hat channel for solid construction.
- Cord winder (located below the rear projector door) and grommets (1-3/4" diameter) allow neat and organized cord management when moving the EMC.
- Exterior fold up side shelf is supported by opening front door and resting the shelf on top. This shelf provide additional workspace for the instructors laptop, document camera or other electronics.
- Exterior side shelf measures 14-15/16"W x 17-1/2"D.
- Middle shelf is adjustable in 1-1/4" increments to accommodate multiple variations of electronics.
- Adjustable (via knob on outside of cart) projector shelf features unique ventilation pattern to assist in dispersing heat while the projector is in use.
- 100% of all painted steel components are powder coated finish; powder coating is the most environmentally safe coating method available today.

*Electronics shown are not included.

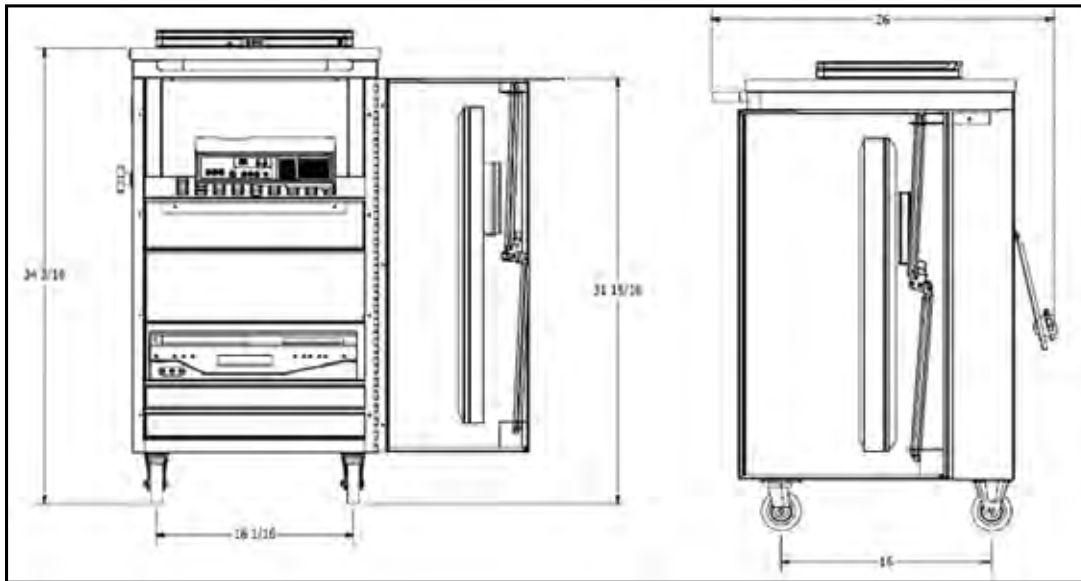
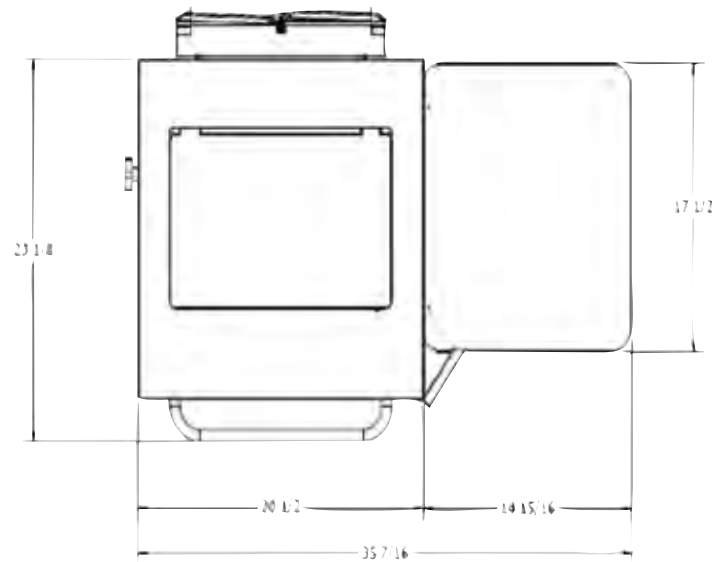
EMC Laminate Top

- Durable $\frac{3}{4}$ " laminated wood top with 3mm PVC edging allows for use of laptops and other equipment on top of the EMC.
- Provides a smooth working and writable surface, unobstructed by handles or metal lips.

Dimensions

- Exterior Dimensions:

EMC-1 20"W x 20-3/8"D x 37"H



*Electronics shown are not included.

SHIPPING AND HANDLING

Product Weights	Unpackaged	Packaged
▪ EMC-1	105 lbs	120 lbs

Freight Class

- All EMCs ship Freight Class 70.

WARRANTY

Lifetime warranty on cart. Warranty details are available upon request.