

# Workbenches and Shop Equipment Price List

EFFECTIVE JANUARY 1, 2015

Prices subject to change without notice.



## CONTENTS:

- PAGE 2: Policies, Services and Warranty
- PAGE 3: Flared and Adjustable Leg Workbenches
- PAGE 4: Electric Workbenches with Panel Legs
- PAGE 5: Electric Modular and Rivet Style Workbenches
- PAGE 6: Workbench Tops
- PAGE 7: Workbench Tops, Stringer, Mounting Channels/Angles
- PAGE 8: Legs, Casters, Shelves
- PAGE 9: Modular Units, Drawers, Shelves, Side and Back Kit
- PAGE 10: Risers, Electric Outlet Panels
- PAGE 11: Wiring Kit, Foreman's Desks
- PAGE 12: Cantilever Accessory System
- PAGE 13: Mobile Workbenches, Service Carts
- PAGE 14: Customized Modular/Mobile Workbenches
- PAGE 15: Modular/Mobile Workbench Accessories
- PAGE 16: Modular/Mobile Workbench Accessories



UNLESS OTHERWISE INDICATED, ALL ITEMS ARE AVAILABLE IN MEDIUM GREY, LIGHT GREY & SAND

UNLESS OTHERWISE NOTED, NATIONAL MOTOR FREIGHT CLASSIFICATION ON ALL ITEMS; **LTL CLASS 70.**



## QUICK-SHIP PROGRAM

NEED AN ORDER FAST? Look for the **◆** logo throughout the book.


Many of top items are available to ship in 2 days.

Quick Ship inventory is available in limited quantities and select colors. For larger orders, please contact customer service for availability.

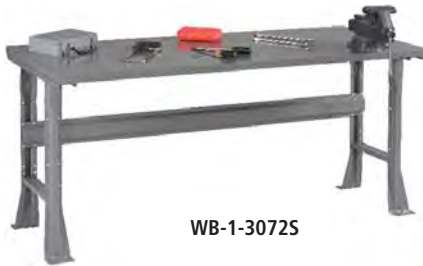
# WORKBENCHES

## Flared and Adjustable Leg Workbenches

ALL LOADS MUST BE EVENLY DISTRIBUTED

Look for the red diamond! 

### STEEL TOP WORKBENCHES



WB-1-3072S

◆ QUICKSHIP COLOR: Medium Grey

CAT. NO.	LOAD CAP.	W	D	H	WT.	PRICE
<b>STEEL TOP WORKBENCH WITH FLARED LEGS</b>						
WB-1-3048S◆	4,000	48	30	33 1/2	91.0	<b>324.00</b>
WB-1-3060S◆	2,500	60	30	33 1/2	103.0	<b>341.00</b>
WB-1-3072S◆	1,800	72	30	33 1/2	120.0	<b>379.00</b>
WB-1-3096S◆*	4,000	96	30	33 1/2	173.0	<b>525.00</b>
WB-1-3660S◆	2,500	60	36	33 1/2	122.0	<b>392.00</b>
WB-1-3672S◆	1,800	72	36	33 1/2	134.0	<b>428.00</b>
WB-1-3696S◆*	4,000	96	36	33 1/2	192.0	<b>578.00</b>
<b>STEEL TOP WORKBENCH WITH ADJUSTABLE LEGS</b>						
WBA-1-3048S◆	4,000	48	30	33 1/2	98.0	<b>344.00</b>
WBA-1-3060S◆	2,500	60	30	33 1/2	110.0	<b>361.00</b>
WBA-1-3072S◆	1,800	72	30	33 1/2	127.0	<b>399.00</b>
WBA-1-3096S◆*	4,000	96	30	33 1/2	182.0	<b>555.00</b>
WBA-1-3660S◆	2,500	60	36	33 1/2	129.0	<b>414.00</b>
WBA-1-3672S◆	1,800	72	36	33 1/2	141.0	<b>450.00</b>
WBA-1-3696S◆*	4,000	96	36	33 1/2	202.0	<b>611.00</b>

\*96" W tops come with three legs. Legs are heavy 13/14 gauge steel, designed to support up to 4,000 lbs. per pair. Legs designed to accept duplex electrical outlets. Stringer is 14 gauge steel.

### PLASTIC TOP WORKBENCHES



WBA-1-3072P

◆ QUICKSHIP COLOR: Medium Grey

CAT. NO.	LOAD CAP.	W	D	H	WT.	PRICE
<b>PLASTIC TOP WORKBENCH WITH FLARED LEGS</b>						
WB-1-3048P	1,200	48	30	33 1/2	126.0	<b>412.00</b>
WB-1-3060P◆	800	60	30	33 1/2	123.0	<b>440.00</b>
WB-1-3072P◆	750	72	30	33 1/2	139.0	<b>501.00</b>
WB-1-3096P*	1,200	96	30	33 1/2	190.0	<b>698.00</b>
WB-1-3660P◆	800	60	36	33 1/2	150.0	<b>523.00</b>
WB-1-3672P◆	750	72	36	33 1/2	182.0	<b>582.00</b>
WB-1-3696P*	1,200	96	36	33 1/2	225.0	<b>803.00</b>
<b>PLASTIC TOP WORKBENCH WITH ADJUSTABLE LEGS</b>						
WBA-1-3048P	1,200	48	30	33 1/2	115.0	<b>432.00</b>
WBA-1-3060P◆	800	60	30	33 1/2	130.0	<b>460.00</b>
WBA-1-3072P◆	750	72	30	33 1/2	145.0	<b>521.00</b>
WBA-1-3096P*	1,200	96	30	33 1/2	200.0	<b>728.00</b>
WBA-1-3660P◆	800	60	36	33 1/2	157.0	<b>545.00</b>
WBA-1-3672P◆	750	72	36	33 1/2	188.0	<b>604.00</b>
WBA-1-3696P*	1,200	96	36	33 1/2	235.0	<b>836.00</b>

### HARDWOOD TOP WORKBENCHES



WBA-1-3072W

◆ QUICKSHIP COLOR: Medium Grey

CAT. NO.	LOAD CAP.	W	D	H	WT.	PRICE
<b>HARDWOOD TOP WORKBENCH WITH FLARED LEGS</b>						
WB-1-3048W	4,000	48	30	33 3/4	96.0	<b>497.00</b>
WB-1-3060W◆	3,800	60	30	33 3/4	124.0	<b>560.00</b>
WB-1-3072W◆	3,600	72	30	33 3/4	142.0	<b>648.00</b>
WB-1-3096W*	4,000	96	30	33 3/4	184.0	<b>896.00</b>
WB-1-3660W◆	3,800	60	36	33 3/4	137.0	<b>650.00</b>
WB-1-3672W◆	3,600	72	36	33 3/4	162.0	<b>746.00</b>
WB-1-3696W*	4,000	96	36	33 3/4	217.0	<b>1,305.00</b>
<b>HARDWOOD TOP WORKBENCH WITH ADJUSTABLE LEGS</b>						
WBA-1-3048W◆	4,000	48	30	33 3/4	109.0	<b>541.00</b>
WBA-1-3060W◆	3,800	60	30	33 3/4	131.0	<b>580.00</b>
WBA-1-3072W◆	3,600	72	30	33 3/4	148.0	<b>668.00</b>
WBA-1-3096W*	4,000	96	30	33 3/4	194.0	<b>926.00</b>
WBA-1-3660W◆	3,800	60	36	33 3/4	144.0	<b>672.00</b>
WBA-1-3672W◆	3,600	72	36	33 3/4	168.0	<b>768.00</b>
WBA-1-3696W*	4,000	96	36	33 3/4	227.0	<b>1,338.00</b>

\*96" W tops come with three legs. Legs are heavy 13/14 gauge steel, designed to support up to 4,000 lbs. per pair. Legs designed to accept duplex electrical outlets. Stringer is 14 gauge steel.

### COMPRESSED WOOD TOP WORKBENCHES



WB-1-3072C

◆ QUICKSHIP COLOR: Medium Grey

CAT. NO.	LOAD CAP.	W	D	H	WT.	PRICE
<b>COMPRESSED WOOD TOP WORKBENCH WITH FLARED LEGS</b>						
WB-1-3048C	2,400	48	30	33 3/4	124.0	<b>436.00</b>
WB-1-3060C◆	1,900	60	30	33 3/4	152.0	<b>457.00</b>
WB-1-3072C◆	1,500	72	30	33 3/4	175.0	<b>518.00</b>
WB-1-3096C*	2,400	96	30	33 3/4	233.0	<b>855.00</b>
WB-1-3660C◆	1,900	60	36	33 3/4	169.0	<b>514.00</b>
WB-1-3672C◆	1,500	72	36	33 3/4	206.0	<b>574.00</b>
WB-1-3696C*	2,400	96	36	33 3/4	270.0	<b>865.00</b>
<b>COMPRESSED WOOD TOP WORKBENCH WITH ADJUSTABLE LEGS</b>						
WBA-1-3048C	2,400	48	30	33 3/4	131.0	<b>456.00</b>
WBA-1-3060C◆	1,900	60	30	33 3/4	159.0	<b>477.00</b>
WBA-1-3072C◆	1,500	72	30	33 3/4	181.0	<b>538.00</b>
WBA-1-3096C*	2,400	96	30	33 3/4	238.0	<b>876.00</b>
WBA-1-3660C◆	1,900	60	36	33 3/4	176.0	<b>536.00</b>
WBA-1-3672C◆	1,500	72	36	33 3/4	212.0	<b>596.00</b>
WBA-1-3696C*	2,400	96	36	33 3/4	280.0	<b>898.00</b>

# WORKBENCHES

## Electric Workbenches with Panel Legs



Look for the red diamond!

### ELECTRIC WORKBENCHES

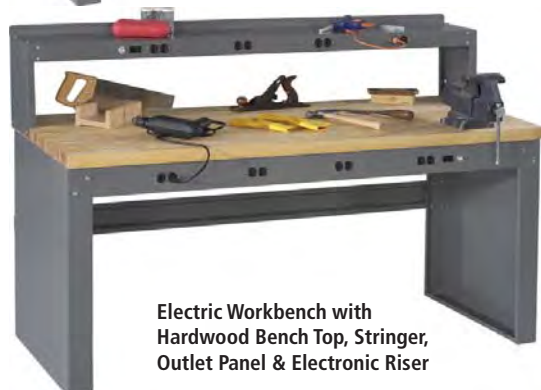
ALL LOADS MUST BE EVENLY DISTRIBUTED



Electric Workbench with Steel Top, Stringer, Outlet Panel & Electronic Riser

◆ QUICKSHIP COLOR: Medium Grey

CAT. NO.	LOAD CAP.	W	D	H	WT.	PRICE
STEEL TOP WITH STRINGER AND OUTLET PANEL						
EB-1-3072S◆	1,800	72	30	33 1/2	156.0	<b>557.00</b>
STEEL TOP WITH STRINGER, OUTLET PANEL AND ELECTRONIC RISER						
EB-2-3072S◆	1,800	72	30	33 1/2	187.0	<b>676.00</b>



Electric Workbench with Hardwood Bench Top, Stringer, Outlet Panel & Electronic Riser

◆ QUICKSHIP COLOR: Medium Grey

CAT. NO.	LOAD CAP.	W	D	H	WT.	PRICE
HARDWOOD TOP WITH STRINGER AND OUTLET PANEL						
EB-1-3072M◆	2,000	72	30	33 3/4	178.0	<b>826.00</b>
EB-1-3672M◆	2,000	72	36	33 3/4	195.0	<b>918.00</b>
HARDWOOD TOP WITH STRINGER, OUTLET PANEL AND ELECTRONIC RISER						
EB-2-3072M◆	2,000	72	30	33 3/4	209.0	<b>945.00</b>
EB-2-3672M◆	2,000	72	36	33 3/4	226.0	<b>1,037.00</b>



Electric Workbench with Plastic Laminate Top, Stringer, Outlet Panel & Electronic Riser

◆ QUICKSHIP COLOR: Medium Grey

CAT. NO.	LOAD CAP.	W	D	H	WT.	PRICE
PLASTIC LAMINATE TOP WITH STRINGER AND OUTLET PANEL						
EB-1-3072P◆	750	72	30	33 1/2	175.0	<b>679.00</b>
EB-1-3672P◆	750	72	36	33 1/2	215.0	<b>754.00</b>
PLASTIC LAMINATE TOP WITH STRINGER, OUTLET PANEL AND ELECTRONIC RISER						
EB-2-3072P	750	72	30	33 1/2	206.0	<b>798.00</b>
EB-2-3672P	750	72	36	33 1/2	246.0	<b>873.00</b>



Electric Workbench with Compressed Wood Top, Stringer, Outlet Panel & Electronic Riser

◆ QUICKSHIP COLOR: Medium Grey

CAT. NO.	LOAD CAP.	W	D	H	WT.	PRICE
COMPRESSED WOOD TOP WITH STRINGER AND OUTLET PANEL						
EB-1-3072C◆	1,500	72	30	33 3/4	211.0	<b>696.00</b>
EB-1-3672C◆	1,500	72	36	33 3/4	239.0	<b>746.00</b>
COMPRESSED WOOD TOP WITH STRINGER, OUTLET PANEL AND ELECTRONIC RISER						
EB-2-3072C◆	1,500	72	30	33 3/4	242.0	<b>815.00</b>
EB-2-3672C◆	1,500	72	36	33 3/4	270.0	<b>865.00</b>

\*Load capacity is for top. This is not the represented load capacity for riser. For riser load capacities, see page 10.


Includes top, panel legs and electronic outlet panel. Electronic wiring kit is not included with outlet panel; to order wiring kit, see page 11.



# WORKBENCHES

## Electric Modular Benches and Rivet-Style

ALL LOADS MUST BE EVENLY DISTRIBUTED

Look for the red diamond! 

### ELECTRIC WORKBENCHES WITH TWO MODULAR DRAWER UNITS

◆ QUICKSHIP COLOR: Medium Grey

CAT. NO.	LOAD CAP.	W	D	H	WT.	PRICE
<b>WITH STEEL TOP</b>						
EMB-1-3072S◆	1,800	72	30	33 1/2	248.0	<b>1,359.00</b>
<b>WITH HARDWOOD TOP</b>						
EMB-1-3072M◆	2,000	72	30	33 3/4	267.0	<b>1,619.00</b>
<b>WITH PLASTIC LAMINATE TOP</b>						
EMB-1-3072P◆	750	72	30	33 1/2	264.0	<b>1,472.00</b>
<b>WITH COMPRESSED WOOD TOP</b>						
EMB-1-3072C◆	1,500	72	30	33 3/4	300.0	<b>1,489.00</b>

Includes top, two modular drawer units and electric outlet panel. Electric wiring kit is not included with outlet panel; to order wiring kit, see page 11.



### ELECTRIC WORKBENCHES WITH ONE MODULAR DRAWER UNIT & ONE MODULAR CABINET UNIT

◆ QUICKSHIP COLOR: Medium Grey

CAT. NO.	LOAD CAP.	W	D	H	WT.	PRICE
<b>WITH STEEL TOP</b>						
EMB-2-3072S◆	1,800	72	30	33 1/2	219.0	<b>1,110.00</b>
<b>WITH HARDWOOD TOP</b>						
EMB-2-3072M◆	2,000	72	30	33 3/4	238.0	<b>1,370.00</b>
<b>WITH PLASTIC LAMINATE TOP</b>						
EMB-2-3072P◆	750	72	30	33 1/2	235.0	<b>1,223.00</b>
<b>WITH COMPRESSED WOOD TOP</b>						
EMB-2-3072C◆	1,500	72	30	33 3/4	271.0	<b>1,240.00</b>

Includes top, one modular drawer unit, one modular cabinet unit and electric outlet panel. Electric wiring kit is not included with outlet panel; to order wiring kit, see page 11.



### RIVET-STYLE WORKBENCH

◆ QUICKSHIP COLOR: Accent Blue

CAT. NO.	LOAD CAP.	W	D	H	WT.	PRICE
<b>WITH ONE HALF-WIDTH DRAWER</b>						
ZWB-6024-HD◆	*	60	24	66	166.0	<b>488.00</b>
ZWB-6030-HD◆	*	60	30	66	179.0	<b>505.00</b>
<b>ADDITIONAL HALF-WIDTH DRAWERS FOR WORKBENCH</b>						
ZHD24	200	30	24	2 3/4	33.0	<b>176.00</b>
ZHD30	200	30	24	2 3/4	35.0	<b>181.00</b>
<b>WITH ONE FULL-WIDTH DRAWER</b>						
ZWB-6024-FD◆	*	60	24	66	188.0	<b>470.00</b>
ZWB-6030-FD◆	*	60	30	66	205.0	<b>490.00</b>
<b>ADDITIONAL FULL-WIDTH DRAWERS FOR WORKBENCH</b>						
ZFD24	200	60	24	2 3/4	53.0	<b>203.00</b>
ZFD30	200	60	30	2 3/4	54.0	<b>207.00</b>

\*Load capacity for each component varies. Riser- 500 lbs. Shelf- 1000 lbs. Top- 1500 lbs. Includes particleboard top, lower shelf, and riser with 60" w x 12" d shelf and surrounding ledge. 60" w x 24" h rear pegboard included for hanging tools and accessories. Drawers are mounted on fully progressive steel ball-bearing suspensions, with load capacity of 150 lbs. per drawer. Choice of full-width drawer with 60" wide lower shelf, or half-width drawer with 30" wide lower shelf (which allows for leg and chair space). Available in Accent Blue only.

**NOTE:** Unit is shown with full-width drawer. Half-width drawer units have only a 30" w lower shelf, which allows for chair and leg space.



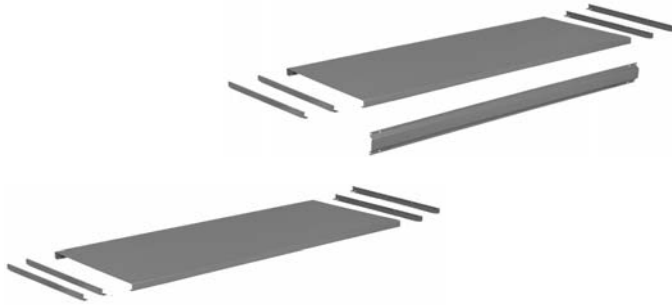
# WORKBENCH ACCESSORIES

## Tops



Look for the red diamond!

### STEEL TOP



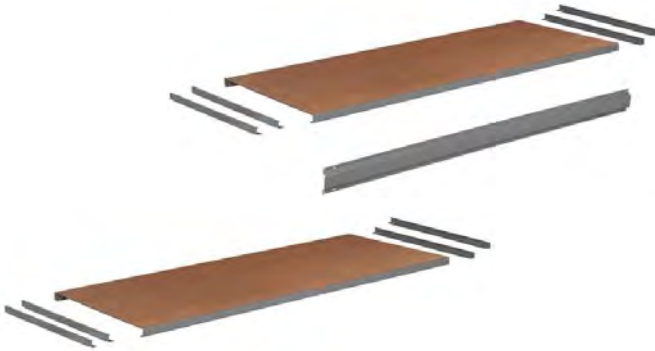
\*96" w tops require three legs.  
Durable 12 gauge steel work surface reinforced with 14 gauge mounting channels. Includes four mounting channels (enough to mount one workbench drawer or two modular cabinets).

**ALL LOADS MUST BE EVENLY DISTRIBUTED**

◆ QUICKSHIP COLOR: Medium Grey

CAT. NO.	LOAD CAP.	W	D	H	WT.	PRICE
<b>WITH STRINGER</b>						
T-3048◆	4,000	48	30	1 1/2	62.0	<b>230.00</b>
T-3060◆	2,500	60	30	1 1/2	74.0	<b>247.00</b>
T-3072◆	1,800	72	30	1 1/2	91.0	<b>285.00</b>
T-3096*◆	4,000	96	30	1 1/2	129.0	<b>384.00</b>
T-3648◆	4,000	48	36	1 1/2	71.0	<b>246.00</b>
T-3660◆	2,500	60	36	1 1/2	90.0	<b>292.00</b>
T-3672◆	1,800	72	36	1 1/2	107.0	<b>328.00</b>
T-3696*◆	4,000	96	36	1 1/2	144.0	<b>428.00</b>
<b>WITHOUT STRINGER</b>						
G-T-3048	4,000	48	30	1 1/2	57.0	<b>215.00</b>
G-T-3060◆	2,500	60	30	1 1/2	69.0	<b>230.00</b>
G-T-3072◆	1,800	72	30	1 1/2	84.0	<b>264.00</b>
G-T-3096*	4,000	96	30	1 1/2	116.0	<b>358.00</b>
G-T-3648	4,000	48	36	1 1/2	66.0	<b>233.00</b>
G-T-3660	2,500	60	36	1 1/2	83.0	<b>275.00</b>
G-T-3672	1,800	72	36	1 1/2	97.0	<b>307.00</b>
G-T-3696*◆	4,000	96	36	1 1/2	131.0	<b>411.00</b>

### STEEL TOP WITH HARDBOARD



\*96" w tops require three legs.  
Durable 12 gauge steel work surface reinforced with 14 gauge mounting channels. Includes four mounting channels (enough to mount one workbench drawer or two modular cabinets).

CAT. NO.	LOAD CAP.	W	D	H	WT.	PRICE
<b>WITH STRINGER</b>						
THB-3060	2,500	60	30	1 1/2	78.0	<b>311.00</b>
THB-3072	1,800	72	30	1 1/2	99.0	<b>353.00</b>
THB-3672	1,800	72	36	1 1/2	119.0	<b>400.00</b>
<b>WITHOUT STRINGER</b>						
G-THB-3060	2,500	60	30	1 1/2	72.0	<b>235.00</b>
G-THB-3072	1,800	72	30	1 1/2	92.0	<b>332.00</b>
G-THB-3672	1,800	72	36	1 1/2	109.0	<b>379.00</b>

### HARDWOOD BENCH TOP



\*96" w tops require three legs.  
Features assorted hardwoods in a butcher-block construction to resist warp.

◆ QUICKSHIP COLOR: Natural

CAT. NO.	LOAD CAP.	W	D	H	WT.	PRICE
<b>WITH STRINGER</b>						
MT-3060◆	3,800	60	30	1 3/4	95.0	<b>466.00</b>
MT-3072◆	3,600	72	30	1 3/4	113.0	<b>554.00</b>
MT-3096*	4,000	96	30	1 3/4	141.0	<b>755.00</b>
MT-3660◆	3,800	60	36	1 3/4	105.0	<b>550.00</b>
MT-3672◆	3,600	72	36	1 3/4	130.0	<b>646.00</b>
MT-3696*	4,000	96	36	1 3/4	169.0	<b>1,155.00</b>
<b>WITHOUT STRINGER</b>						
G-MT-3060◆	3,800	60	30	1 3/4	87.0	<b>440.00</b>
G-MT-3072◆	3,600	72	30	1 3/4	103.0	<b>524.00</b>
G-MT-3096*	4,000	96	30	1 3/4	128.0	<b>707.00</b>
G-MT-3660◆	3,800	60	36	1 3/4	97.0	<b>524.00</b>
G-MT-3672◆	3,600	72	36	1 3/4	120.0	<b>616.00</b>
G-MT-3696*	4,000	96	36	1 3/4	156.0	<b>1,107.00</b>

# WORKBENCH ACCESSORIES

## Tops, Stringers, Mounting Channels & Angles

ALL LOADS MUST BE EVENLY DISTRIBUTED



◆ QUICKSHIP COLOR: White

CAT. NO.	LOAD CAP.	W	D	H	WT.	PRICE
<b>WITH STRINGER</b>						
PT-3060◆	800	60	30	1 1/2	94.0	<b>346.00</b>
PT-3072◆	750	72	30	1 1/2	110.0	<b>407.00</b>
PT-3096*	1,200	96	30	1 1/2	147.0	<b>557.00</b>
PT-3660◆	800	60	36	1 1/2	118.0	<b>423.00</b>
PT-3672◆	750	72	36	1 1/2	150.0	<b>482.00</b>
PT-3696*	1,200	96	36	1 1/2	177.0	<b>653.00</b>
<b>WITHOUT STRINGER</b>						
G-PT-3060◆	800	60	30	1 1/2	83.0	<b>320.00</b>
G-PT-3072◆	750	72	30	1 1/2	100.0	<b>377.00</b>
G-PT-3096*	1,200	96	30	1 1/2	134.0	<b>509.00</b>
G-PT-3660◆	800	60	36	1 1/2	110.0	<b>397.00</b>
G-PT-3672◆	750	72	36	1 1/2	140.0	<b>452.00</b>
G-PT-3696*	1,200	96	36	1 1/2	164.0	<b>605.00</b>

### PLASTIC LAMINATE TOP



\*96" w tops require three legs.  
High pressure laminate top & edges; particleboard core.  
Non-conductive surface is ideal for electronics.

◆ QUICKSHIP COLOR: Natural

CAT. NO.	LOAD CAP.	W	D	H	WT.	PRICE
<b>WITH STRINGER</b>						
CT-3060◆	1,900	60	30	1 3/4	123.0	<b>363.00</b>
CT-3072◆	1,500	72	30	1 3/4	146.0	<b>424.00</b>
CT-3096*	2,400	96	30	1 3/4	185.0	<b>705.00</b>
CT-3660◆	1,900	60	36	1 3/4	137.0	<b>414.00</b>
CT-3672◆	1,500	72	36	1 3/4	174.0	<b>474.00</b>
CT-3696*	2,400	96	36	1 3/4	222.0	<b>715.00</b>
<b>WITHOUT STRINGER</b>						
G-CT-3060◆	1,900	60	30	1 3/4	115.0	<b>337.00</b>
G-CT-3072◆	1,500	72	30	1 3/4	136.0	<b>394.00</b>
G-CT-3096*	2,400	96	30	1 3/4	172.0	<b>657.00</b>
G-CT-3660◆	1,900	60	36	1 3/4	129.0	<b>388.00</b>
G-CT-3672◆	1,500	72	36	1 3/4	164.0	<b>444.00</b>
G-CT-3696*	2,400	96	36	1 3/4	209.0	<b>667.00</b>

### COMPRESSED WOOD TOP



\*96" w tops require three legs.  
Tempered hardboard top and bottom surface laminated to compressed wood core. Banded on all sides with hard maple.

◆ QUICKSHIP COLOR: Medium Grey

CAT. NO.	W	D	H	WT.	PRICE
WBS-48◆	48	—	5	6.4	<b>24.00</b>
WBS-60◆	60	—	5	8.1	<b>26.00</b>
WBS-72◆	72	—	5	9.7	<b>30.00</b>
WBS-96◆	96	—	5	13.2	<b>48.00</b>

### STRINGER

Ties workbench legs together for added stability.  
Stiffening beads provide added strength.



◆ QUICKSHIP COLOR: Medium Grey

CAT. NO.	W	D	H	WT.	PRICE
WBSR-30◆	1 3/16	30	1 5/16	4.2	<b>18.00</b>
WBSR-36◆	1 3/16	36	1 5/16	5.0	<b>21.00</b>

Mounts stackable drawer or modular cabinets on steel tops. Four mounting channels are included with steel top; order additional channels for unique configurations only.

### MOUNTING CHANNELS



### MOUNTING ANGLES

CAT. NO.	W	D	H	WT.	PRICE
WBLB-30	1 7/8	22	1 1/16	3.4	<b>14.50</b>

Mounts stackable drawer or modular cabinets on electronic workbench. One set required per hanging item.



# WORKBENCH ACCESSORIES

## Legs, Casters, Shelves



Look for the red diamond!

ALL LOADS MUST BE EVENLY DISTRIBUTED

### FLARED LEG



Priced per leg. 13 gauge steel construction. Complete with two easily removable plastic outlet inserts. Feet prepunched for floor anchoring.

24" deep legs available in quantity; consult factory for pricing.

◆ QUICKSHIP COLOR: Medium Grey

CAT. NO.	LOAD CAP.*	W	D	H	WT.	PRICE
L-2830◆	5,000	3 1/2	30	28	14.5	<b>57.00</b>
L-2836◆	5,000	3 1/2	36	28	15.5	<b>59.00</b>
L-3230◆	5,000	3 1/2	30	32	14.5	<b>47.00</b>
L-3236◆	5,000	3 1/2	36	32	16.0	<b>50.00</b>

\*Load Capacity represents total per pair.

### ADJUSTABLE LEG



Priced per leg. 14 gauge steel with a 13 gauge top member.

Complete with two easily removable plastic outlet inserts. Feet prepunched for floor anchoring.

◆ QUICKSHIP COLOR: Medium Grey

CAT. NO.	LOAD CAP.*	W	D	H**	WT.	PRICE
AL-3230◆	4,000	3	30	27 7/8 - 35 3/8	17.8	<b>57.00</b>
AL-3236◆	4,000	3	36	27 7/8 - 35 3/8	19.3	<b>61.00</b>
AL-4230	3,000	3	30	35 3/8 - 41 3/8	18.8	<b>66.00</b>
AL-4236	3,000	3	36	35 3/8 - 41 3/8	20.3	<b>70.00</b>

\*Load Capacity represents total per pair.

\*\*Adjustable on 1 1/2" centers.

### PANEL LEGS



Priced per pair. 16 gauge steel construction. Prepunched holes for easy attachment.

◆ QUICKSHIP COLOR: Medium Grey

CAT. NO.	LOAD CAP.*	W	D	H	WT.	PRICE
LP-3230◆	2,000	3	28	32	48.0	<b>173.00</b>

\*Load Capacity represents total per pair.

### CASTERS

Mounting Bracket with swivel casters.



Casters attach to flared legs or adjustable legs to provide mobility for your workbench. Kit includes mounting brackets and four casters.

Mounting Bracket with rigid casters.

◆ QUICKSHIP COLOR: Medium Grey

CAT. NO.	LOAD CAP.	CASTERS	WT.	PRICE
<b>FOR 30"D AND 36"D LEGS</b>				
WBCK-3036◆	1,000	Two rigid, two swivel	16.0	<b>92.00</b>
WBCK-3036S	1,000	Four swivel	16.0	<b>95.00</b>
<b>FOR 96"W WORKBENCH</b>				
WBCK-3036-3	1,000	Three rigid, Three swivel	24.0	<b>138.00</b>

### LOWER SHELF

FOR UNITS WITH OPEN BENCH LEGS



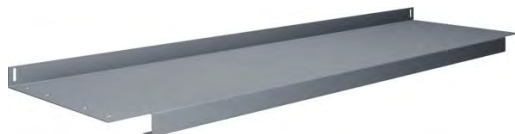
16 gauge steel shelf.

◆ QUICKSHIP COLOR: Medium Grey

CAT. NO.	LOAD CAP.	W	D	WT.	PRICE
S-48◆	450	48	14	15.5	<b>53.00</b>
S-60◆	450	60	14	19.5	<b>63.00</b>
S-72◆	350	72	14	23.0	<b>74.00</b>
S-96◆	850	96	14	31.0	<b>100.00</b>

### FULL DEPTH LOWER SHELF

FOR UNITS WITH OPEN BENCH LEGS



16 gauge steel shelf to be used with 30" and 36" flared legs only.

CAT. NO.	LOAD CAP.	W	D	WT.	PRICE
FS-48	450	48	20	15.5	<b>100.00</b>
FS-60	450	60	20	19.5	<b>109.00</b>
FS-72	350	72	20	23.0	<b>125.00</b>
FS-96*	850	96	20	31.0	<b>202.00</b>

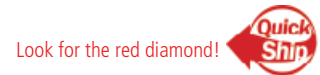
\*96" w are two pieces.



# WORKBENCH ACCESSORIES

## Modular Units, Drawers, Shelves, Side & Back Kit

**ALL LOADS MUST BE EVENLY DISTRIBUTED**



**NOTE:** Load capacities for Modular Storage Cabinets and Modular Drawer Cabinets represent units when being used to support a workbench with weight evenly distributed on top. Drawer load capacity is 70 lbs.

♦ QUICKSHIP COLOR: Medium Grey

CAT. NO.	LOAD CAP.	W	D	H	WT.	PRICE
<b>MODULAR CABINETS</b>						
MS-1524♦	1,000	15	24	32	48.0	<b>276.00</b>
MD-1524♦	1,000	15	24	32	77.0	<b>525.00</b>
MD2-1524	1,000	15	24	32	68.0	<b>501.00</b>
MD3-1524♦	1,000	15	24	32	69.0	<b>505.00</b>
<b>EXTRA DRAWER DIVIDER (Galvanized Only)</b>						
WBDD-12♦		12 3/8	—	4 1/4	0.6	<b>1.80</b>
<b>OPTIONAL SECOND SHELF</b>						
MBS-1524♦	100	15	23	3/4	5.0	<b>37.00</b>

Storage Cabinet comes standard with locking recessed handle. One adjustable shelf included. Drawer unit comes standard with keylock which locks all drawers simultaneously. Includes one divider per drawer. Order tops without stringers with the modular units. Other styles of modular units shown on page 14. Freight Class.: LTL CLASS 100.

### MODULAR CABINETS



### CASTER KIT FOR MODULAR CABINETS

CAT. NO.	LOAD CAP.	W	D	H	WT.	PRICE
CB-1524	1,000	15	24	3 1/4	18.0	<b>102.00</b>



♦ QUICKSHIP COLOR: Medium Grey

CAT. NO.	LOAD CAP.	W	D	H	WT.	PRICE
<b>STACKABLE DRAWER</b>						
WBD-1	70	15	18	8 1/4	18.0	<b>142.00</b>
WBD-1MG*♦	70	15	18	8 1/4	21.0	<b>83.00</b>
<b>STACKABLE DRAWER (With Installed Cam Lock)</b>						
WBD-1LMG*♦	70	15	18	8 1/4	20.0	<b>88.00</b>
<b>CAM LOCK (Field Installable)</b>						
CL-1♦		—	—	—	0.1	<b>5.20</b>
<b>EXTRA DIVIDER (Galvanized Only)</b>						
WBDD-12♦		12 3/8	—	4 1/4	0.6	<b>1.80</b>

\*Medium Grey Only.

### STACKABLE DRAWER

Includes padlock hasp, one drawer divider, one removable tray, and knockout for optional key lock.

When mounting to steel top, use one set of Mounting Channels (included with top); when mounting to electronic workbench, use one set of Mounting Angles. Mounts to all other tops directly.



### 25" WIDE HANGING DRAWER

CAT. NO.	LOAD CAP.	W	D	H	WT.	PRICE
WBD-25	70	25	22	6	17.0	<b>140.00</b>

Includes left and right mounting channels, rear brace and drawer. Drawer includes cam lock.

When mounting to steel top, use one set of Mounting Channels (included with top); when mounting to electronic workbench, use one set of Mounting Angles (WBLB-30). Mounts to wood tops directly.



♦ QUICKSHIP COLOR: Medium Grey

CAT. NO.	LOAD CAP.	W	D	H	WT.	PRICE
SM-42♦	250	42	14	1 1/2	14.4	<b>53.00</b>

16 gauge steel shelf.

### LOWER SHELF FOR MODULAR UNITS WITH 72" W TOPS



♦ QUICKSHIP COLOR: Medium Grey

CAT. NO.	W	D	H	WT.	PRICE
SB-3048♦	48	30	3	12.2	<b>46.00</b>
SB-3060♦	60	30	3	14.0	<b>49.00</b>
SB-3072♦	72	30	3	15.7	<b>53.00</b>
SB-3096♦	96	30	3	18.9	<b>70.00</b>
SB-3648♦	48	36	3	13.9	<b>50.00</b>
SB-3660♦	60	36	3	15.2	<b>52.00</b>
SB-3672♦	72	36	3	17.0	<b>56.00</b>
SB-3696♦	96	36	3	19.9	<b>72.00</b>

### SIDE & BACK RAIL KIT



Adds 3" in overall workbench height.



# WORKBENCH ACCESSORIES

## Risers, Electric Outlet Panel



Look for the red diamond!

### WORKBENCH RISER WITH END SUPPORTS



Risers have a 1 1/2" tall backstop. \*96" w risers use a center upright. Riser will add 12" overall height to the workbench. May be double stacked. 16 gauge steel.

### ELECTRIC RISER WITH END SUPPORTS



Risers have a 1 1/2" tall backstop. \*96" w risers use a center upright. Riser will add 12" or 18" overall height to the workbench.

Includes knockouts for four duplex receptacle outlets. Optional wiring kit may be ordered on page 11 or prewired below. May be double stacked. 16 gauge steel.

### PREWIRED ELECTRIC RISER WITH END SUPPORTS



Risers have a 1 1/2" tall backstop. \*96" w risers use a center upright. Riser will add 12" or 18" overall height to the workbench. May be double stacked. 16 gauge steel.

### DOUBLE DECKER CENTER RISER WITH END SUPPORTS



### ELECTRIC OUTLET PANEL FOR BENCHES WITH PANEL LEGS



### ELECTRIC OUTLET PANEL FOR BENCHES WITH TWO MODULAR UNITS



### ALL LOADS MUST BE EVENLY DISTRIBUTED

◆ QUICKSHIP COLOR: Medium Grey

CAT. NO.	LOAD CAP.	W	D	H	WT.	PRICE
R-1048◆	600	48	10 1/2	12	18.5	77.00
R-1060◆	450	60	10 1/2	12	21.0	78.00
R-1072◆	350	72	10 1/2	12	24.0	87.00
R-1096*◆	1,000	96	10 1/2	12	32.0	136.00
R-106018	450	60	10 1/2	18	24.0	93.00
R-107218	350	72	10 1/2	18	27.0	102.00

◆ QUICKSHIP COLOR: Medium Grey

CAT. NO.	LOAD CAP.	W	D	H	WT.	PRICE
RE-1060◆	450	60	10 1/2	12	27.0	110.00
RE-1072◆	350	72	10 1/2	12	31.0	119.00
RE-1560◆	450	60	15	12	35.0	136.00
RE-1572◆	350	72	15	12	39.0	146.00
RE-18-1560◆	450	60	15	18	38.0	146.00
RE-18-1572◆	350	72	15	18	43.0	156.00
RE-18-1596*◆	300	96	15	18	53.0	205.00

CAT. NO.	LOAD CAP.	W	D	H	WT.	PRICE
REI-1060-WK-1	450	60	10 1/2	12	30.0	269.00
REI-1072-WK-1	350	72	10 1/2	12	34.0	277.00
REI-1560-WK-1	450	60	15	12	35.0	291.00
REI-1572-WK-1	350	72	15	12	53.0	305.00
REI-18-1560-WK-1	450	60	15	18	54.0	301.00
REI-18-1572-WK-1	350	72	15	18	60.0	315.00
REI-18-1596-WK-1*	300	96	15	18	72.0	357.00

CAT. NO.	LOAD CAP.	W	D	H	WT.	PRICE
R2-1060	450	60	10 1/2	24	42.0	153.00
R2-1072	350	72	10 1/2	24	48.0	170.00

Risers have no back flanges. Unit may be mounted in center of top for double entry.

◆ QUICKSHIP COLOR: Medium Grey

CAT. NO.	W	D	H	WT.	PRICE
WOP-72◆	71 5/8	3	4 3/8	17.4	99.00

Provides mounting plate for four duplex outlets on panel leg workbenches. Optional wiring kit is available on page 11.

◆ QUICKSHIP COLOR: Medium Grey


CAT. NO.	W	D	H	WT.	PRICE
<b>WITHOUT WIRING KIT</b>					
WOP-42◆	42	3 3/8	4 3/8	10.3	45.00
<b>WIRING KIT INSTALLED</b>					
WOPI-42-WK-1	42	3 3/8	4 3/8	12.8	194.00

Provides mounting plate for four duplex outlets on panel leg workbenches. Optional wiring kit is available on page 11.

# WORKBENCHES

## Wiring Kit, Foreman's Desk

ALL LOADS MUST BE EVENLY DISTRIBUTED

Look for the red diamond! 

### WIRING KIT

CAT. NO.	W	D	H	WT.	PRICE
WK-1♦				2.5	107.00

Pre-wired for quick installation. Comes complete with four duplex receptacles, on/off switch with pilot light, 8 foot grounded cord and plug, 15 amp, 115 volt service and circuit breaker. Use with electronic riser, outlet panels, or electronic workbench.



### FOREMAN'S DESK



#### OPEN STYLE

14 gauge corner posts.



#### CLOSED STYLE

Combines a convenient, sturdy writing surface with lockable storage space. 14 gauge corner posts with 20 gauge panels. Lockable storage cabinet has three point system with two keys. Cabinet comes standard with one adjustable shelf (two openings).



#### WALL MOUNTED

14 gauge supports with 20 gauge panels.

♦ QUICKSHIP COLOR: Medium Grey

CAT. NO.	W	D	H	LOAD CAPACITY			WT.	PRICE
				TOP	DRAWER	SHELF		
SR-57♦	34 1/2	29	53	<b>OPEN STYLE</b>			97.0	484.00
				250	70	200		
SR-58♦	34 1/2	29	53	<b>CLOSED STYLE</b>			155.0	772.00
				250	70	200		
SR-59♦	34 1/2	29	17 1/2*	<b>WALL MOUNTED</b>			83.0	493.00
				250	70	—		

\*Note: If including mounting bracket in height calculations, add 16 1/4" to height listed above.

Combines a convenient, sturdy writing surface with compartmentalized riser for storing writing utensils, forms and papers. Drawer comes standard with lock and two keys. Shipped partially assembled. Medium Grey only.

# WORKBENCH ACCESSORIES

## Cantilever Accessory System



Look for the red diamond!

ALL LOADS MUST BE EVENLY DISTRIBUTED

### THE CANTILEVERED ACCESSORY SYSTEM



The Cantilevered Accessory System provides a variety of convenient storage options for your workstation. Start with upright frames, then add accessories such as shelves with dividers, sloped shelves, an overhead light, or a bin rail for adding third-party bins for small parts storage.

### UPRIGHT FRAME

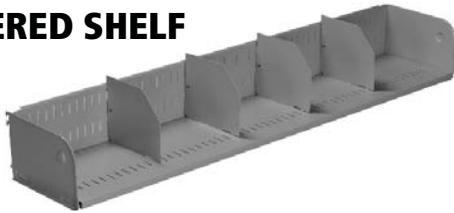


Upright frames attach to the rear edge of the work surface to provide a substantial structure from which to support storage shelves, bin rails, sloped shelves and lighting. Attaches with four bolts per side (drilling required to attach). Both sizes of uprights may be attached directly to the Tennsco steel or wood tops.

**NOTE:** Cantilever system requires 72" or wider top.

CAT. NO.	DESCRIPTION	W	D	H	WT.	PRICE
WBRU-24A	Sold as a Pair	4	5 1/4	24	10.7	<b>70.00</b>
WBRU-42A	Sold as a Pair	4	5 1/4	42	15.7	<b>79.00</b>

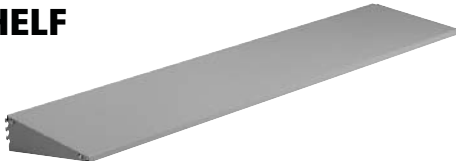
### CANTILEVERED SHELF



CAT. NO.	W	D	H	WT.	PRICE
TWBS-6012A	60	12	7 1/2	21.0	<b>70.00</b>

Shelves attach to the upright frame without tools and may be quickly and easily repositioned. Four adjustable dividers are furnished with each shelf.

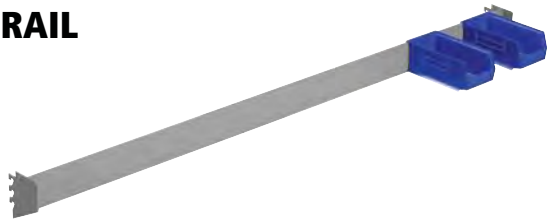
### SLOPED SHELF



CAT. NO.	W	D	H	WT.	PRICE
TWSS-6012A	60	12	3/4	19.0	<b>133.00</b>

Sloped shelves attach to the upright frame without tools and may be quickly and easily repositioned. Includes a front lip to keep items from rolling off the shelf.

### BIN RAIL



CAT. NO.	W	D	H	WT.	PRICE
TWBR-60	60	3 7/8	4 3/16	7.0	<b>106.00</b>

Bin Rails accommodate a variety of commercially available plastic and steel parts bins. Rail attaches to upright frame without the use of tools and is easily adjustable up or down on the frame.

### CANTILEVER TASK LIGHTING



Task Light

Task Light with Optional Light Bracket Kit

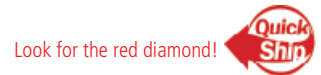
CAT. NO.	W	D	H	WT.	PRICE
<b>TASK LIGHT</b>					
TWCTL-48	50 5/32	8	1 25/32	14.0	<b>183.00</b>
<b>LIGHT BRACKET KIT</b>					
TWLB-60	60	13 1/2	3 1/2	8.2	<b>44.00</b>

The cantilever task light provides overhead lighting for your work area. Unit contains two 32-watt lamps and is prewired with an 8' power cord and power switch. Use bracket kit for mounting onto cantilever uprights. Mounting bracket allows light to adjust back and forth in 1 1/2" increments, or an angle if mounted on top. Available in black only.

# WORKBENCH ACCESSORIES

## Mobile Workbenches, Service Cart

ALL LOADS MUST BE EVENLY DISTRIBUTED



### MOBILE WORKBENCH WITH MODULAR CABINET & FOUR DRAWER

◆ QUICKSHIP COLOR: Medium Grey

CAT. NO.	LOAD CAP.	W	D	H	WT.	PRICE
<b>MOBILE WORKBENCH</b>						
MB-1-2542◆	1,000	42	25	36 1/4	182.0	<b>1,070.00</b>
<b>EXTRA SHELF FOR CABINET</b>						
MBS-2124◆	100	21	23	3/4	6.4	<b>41.00</b>

All welded construction with hardboard laminated to bench top for a smooth work surface. Comes standard with four drawers, four drawer dividers, gear lock which secures all four drawers simultaneously, two stationary and two locking swivel wheels and lockable storage cabinet with one adjustable shelf. Extra shelf for cabinet available above. Shipped fully assembled except for the mounting casters. Freight Class.: LTL CLASS 100.

NOTE: Drawers have a load capacity of 70 lbs.



### MOBILE WORKBENCH WITH MODULAR CABINET, ONE DRAWER & TWO SHELVES

◆ QUICKSHIP COLOR: Medium Grey

CAT. NO.	LOAD CAP.	W	D	H	WT.	PRICE
<b>MOBILE WORKBENCH</b>						
MB-2-2542◆	1,000	42	25	36 1/4	157.0	<b>852.00</b>
<b>EXTRA SHELF FOR CABINET</b>						
MBS-2124◆	100	21	23	3/4	6.4	<b>41.00</b>
<b>EXTRA SHELF FOR LEFT SIDE</b>						
MBS-1524◆	100	15	23	3/4	5.0	<b>37.00</b>

All welded construction with hardboard laminated to bench top for a smooth work surface. Comes standard with one locking drawer, one drawer divider, two shelves under the drawer, two stationary and two locking swivel wheels and lockable storage cabinet with one adjustable shelf. Shipped fully assembled except for mounting the casters. Extra shelves for either side of unit available above. Freight Class.: LTL CLASS 100.

NOTE: Drawer has a load capacity of 70 lbs.



### SERVICE CART

◆ QUICKSHIP COLOR: Medium Grey

CAT. NO.	LOAD CAP.	W	D	H	WT.	PRICE
<b>16" WIDE SERVICE CART</b>						
SC-1630◆	150*	30	16	32	36.0	<b>167.00</b>
<b>OPTIONAL CENTER TRAY 16" WIDE SERVICE CART</b>						
ST-16◆	150	30	16	3 1/4	11.0	<b>50.00</b>
<b>24" WIDE SERVICE CART</b>						
SC-2436◆	150*	36	24	32	40.0	<b>210.00</b>
<b>OPTIONAL CENTER TRAY 24" WIDE SERVICE CART</b>						
ST-24◆	150	25	24	3 1/4	15.8	<b>66.00</b>

\*Load capacity is based on 150 lbs. per tray.  
Two-shelf service cart with optional center tray. Trays have 3/8" lip and can be reversed to use as either a flat work surface or a storage compartment. Hard rubber casters (two swivel and two stationary). 16 gauge steel uprights with 20 gauge steel trays. Shipped unassembled. Medium Grey only.





# MODULAR/MOBILE WORKBENCHES

## Customized Mobile Workbenches 30" and 45"



Look for the red diamond!

ALL LOADS MUST BE EVENLY DISTRIBUTED

### MODULAR/MOBILE WORKBENCHES

Customize your workbench by mixing and matching components to match your specific requirements:

- Start with a single or a combination of pedestals.
- Select a steel, hardwood or foreman's top.
- Add optional accessories.
- Choose mobile base for portability.

30" WIDE



Use two 15" pedestals OR one 30" pedestal.

45" WIDE



Use three 15" pedestals OR one 30" and one 15" pedestal OR one 45" pedestal.



NOTE: May also be used without casters as a stand alone workbench.

### PEDESTALS – 15", 30" AND 45" WIDE



MD-1524  
4-Drawer Unit



MD3-1524  
3-Drawer Unit



MD2-1524  
2-Drawer Unit



MS-1524  
Hinged Door Unit



MBB1-2415  
Bin Box Unit



MSR-3024  
Hinged Door Unit



MD-3024  
4-Drawer Unit



MSDS-3024  
Sliding Door Unit



MSR-4524  
Hinged Door Unit



MSDS-4524  
Sliding Door Unit

◆ QUICKSHIP COLOR: Medium Grey

CAT. NO.	W	D	H	WT.	PRICE
<b>15" PEDESTALS</b>					
MS-1524◆	15	24	32	48.0	276.00
MD-1524◆	15	24	32	77.0	525.00
MD2-1524	15	24	32	68.0	501.00
MD3-1524◆	15	24	32	69.0	505.00
MBB1-2415	15	24	32	105.0	559.00
<b>30" PEDESTALS</b>					
MSDS-3024	30	24	32	79.0	470.00
MD-3024	30	24	32	142.0	724.00
MSR-3024	30	24	32	70.0	411.00
<b>45" PEDESTALS</b>					
MSDS-4524	45	24	32	99.0	525.00
MSR-4524	45	24	32	115.0	491.00

# MODULAR/MOBILE WORKBENCHES

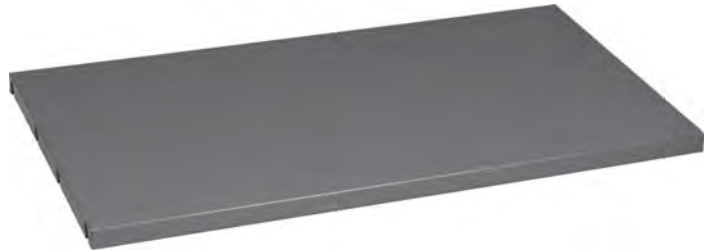
## Accessory Items

ALL LOADS MUST BE EVENLY DISTRIBUTED

Look for the red diamond! 

### STEEL TOPS

CAT. NO.	W	D	H	WT.	PRICE
<b>30" STEEL TOP</b>					
STM-3025	30	25	1 1/2	33.0	<b>153.00</b>
<b>45" STEEL TOP</b>					
STM-4525	45	25	1 1/2	44.0	<b>185.00</b>



### HARDWOOD TOPS

CAT. NO.	W	D	H	WT.	PRICE
<b>30" HARDWOOD TOP</b>					
MTM-3025	30	25	1 1/4	33.0	<b>265.00</b>
<b>45" HARDWOOD TOP</b>					
MTM-4525	45	25	1 1/4	49.0	<b>323.00</b>



### RISERS

CAT. NO.	W	D	H	WT.	PRICE
<b>30" RISER</b>					
R-1030	30	8	10 1/4	16.0	<b>68.00</b>
<b>45" RISER</b>					
R-1045	45	8	10 1/4	16.9	<b>77.00</b>

Risers have a 1 1/2" tall backstop.



### ELECTRIC RISERS

CAT. NO.	W	D	H	WT.	PRICE
<b>30" ELECTRIC RISER</b>					
REI-1030WK	30	8	10 1/4	21.0	<b>171.00</b>
<b>45" ELECTRIC RISER</b>					
REI-1045WK	45	8	10 1/4	23.0	<b>182.00</b>

Risers have a 1 1/2" tall backstop. Includes pre-wired electrical outlets.



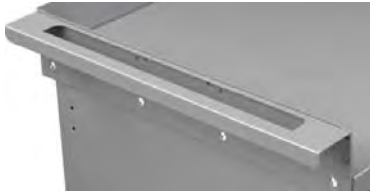
# MODULAR/MOBILE WORKBENCHES

## Accessory Items



Look for the red diamond!

### HANDLES



MH-25



MHE-25

◆ QUICKSHIP COLOR: Medium Grey

CAT. NO.	W	D	H	WT.	PRICE
<b>HANDLE</b>					
MH-25	25	5	6	7.5	<b>23.00</b>
<b>ELECTRIC HANDLE*</b>					
MHE-25◆	25	8	10 1/4	10.0	<b>162.00</b>

\*Includes two duplex electrical outlets, on/off switch and circuit breaker.

### FOREMAN'S DESK TOP



CAT. NO.	W	D	H	WT.	PRICE
<b>30" FOREMAN'S DESK TOP</b>					
MBSR-30	30	25	10 1/4	62.0	<b>402.00</b>
<b>45" FOREMAN'S DESK TOP</b>					
MBSR-45	45	25	10 1/4	78.0	<b>426.00</b>

### CASTERS



30" Caster Kit



45" Caster Kit

CAT. NO.	W	D	H	WT.	PRICE
<b>30" CASTER KIT</b>					
CB-3024	30	24	6 1/4	22.0	<b>123.00</b>
<b>45" CASTER KIT</b>					
CB-4524	45	24	6 1/4	26.0	<b>146.00</b>

### SIDE AND BACK RAIL KIT



Side and Back Rails  
(Top Not Included)

CAT. NO.	W	D	H	WT.	PRICE
<b>30" SIDE AND BACK RAIL KIT</b>					
SB-3025	30	25	2 1/4	9.4	<b>34.00</b>
<b>45" SIDE AND BACK RAIL KIT</b>					
SB-4525	45	25	2 1/4	11.2	<b>38.00</b>