

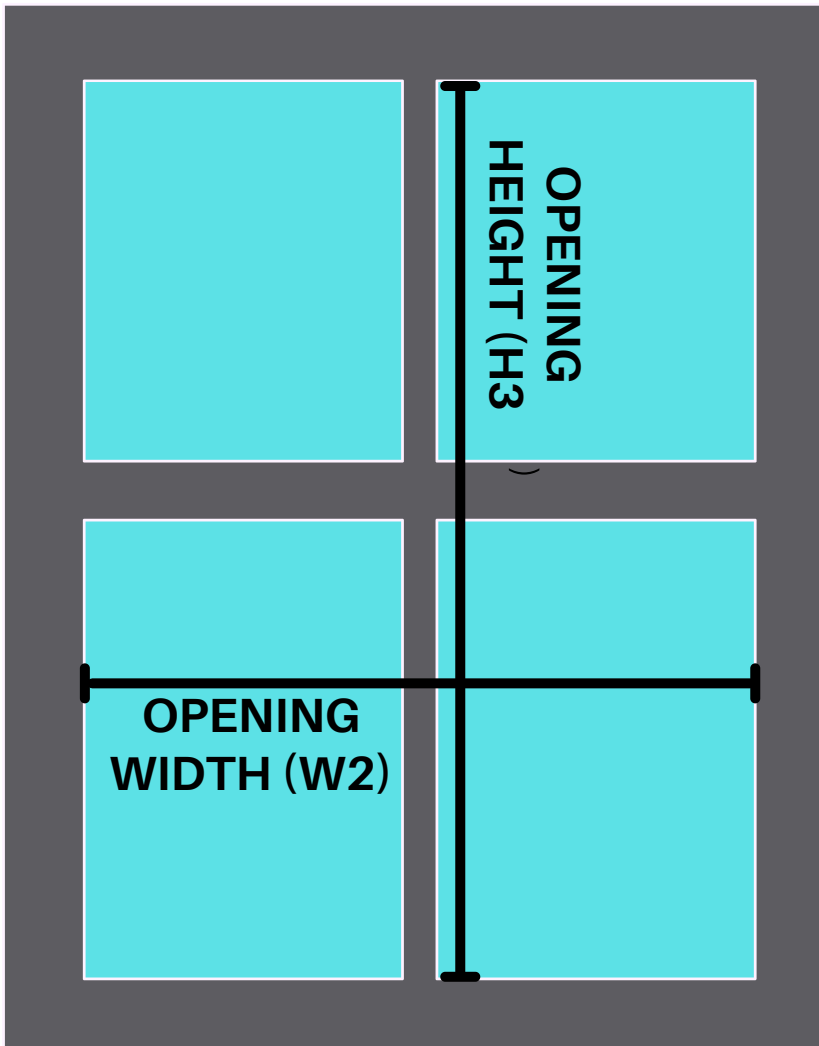


ROLLOK

Rolling Doors & Security Shutters



Measuring Instructions and Considerations



- Height is measured for the clear opening height or the H3 measurement. H2 measurement is H3+ 3" for the bottom slat, H1 is the H2 measurement + the box size. When providing the H3 (opening height) our team can provide you the other 2 dimensions so you can verify you have header space for the box.
- Width is measured for the clear opening width or the W2 measurement, this is the inside guide rail dimension of the shutter. For the overall width or W1 width you would add the width of the guiderail being used. Your Rollok Account Manager will provide you that dimension once the material is selected for the project.

- When measuring your opening size look for any items such as a handle, molding, ledge, or any other obstruction that would impede the motion of the shutter/door.

Description

24mm designed for multiple uses with a contemporary stile in mind.

Application

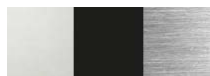
- Security
- Light Control
- Noise Reduction
- Privacy
- Automated Control

24mm Features and Benefits

- Low profile allows for lower profile housing
- Extruded aluminum structure provides rigidity
- Sleek flat surface profile provides a clean and contemporary look

Colors

- Anodized
- Brushed
- Black
- Custom powder coating is available. Additional charges are applied for this service as well as lead times may have to be extended based on powder availability



Stock Colors

Housing and Design

90 degree

Operators

- Manual: Spring Assisted
- Motorized: Remote Control, Key Pad, Wall Switch
- Tambour (no operator)

Motorized Systems:

- Control multiple shutters with master operator
- Keypad availability for minimizing the hassle of additional keys and/or remotes

Slat Profile:

- Material: Extruded aluminum
- Slat Profile, made of a 6063-T5, AN 518 clear anodized. Slat is 24mm high with a wall thickness of .040". included interseal liner between every slat, Interlocking slats, continuous for the entire door width, must have side locks pressed to the ends of slats.
- Rated thickness – .335".
- Weight per square foot – 1.22 lbs.

Box Size		4"	5.0"	5.5"	6.5"	7"	8"	9"
Slat Size	24mm Single Wall							
Axle Dia.	40mm	N/A	42.00"	46.00"	80.00"	86.00"		
	60mm	N/A	31.00"	40.00"	76.00"	80"	108.00"	124.00"
	Minimum Widths:			24.00"	28.00"	32.00"	48.00"	

Description

35mm designed for multi-use. Protection for merchandise, and for residential areas.

Application

- Energy Savings
- Light Control
- Noise Reduction
- Privacy
- Automated Control

35mm Features and Benefits

- Extremely durable double wall design
- Rigid with minimal flex
- Impact resistant
- Recommended for extra security and severe weather protection

Colors

- Silver
- Anodized
- Custom powder coating is available. Additional charges are applied for this service as well as lead times may have to be extended based on powder availability



Stock Color

Housing Design

90 degree

Operators

- Manual: Spring Assisted
- Automated: Wall Switch or Remote Control, Emergency Override

Motorized Systems:

- Control multiple shutters with master operator
- Home Automation Integration
- Keypad for outdoor access

Slat Profile:

- Material: Extruded aluminum, alloy 6063-T5, AN 518 clear anodized
- Slat Profile: 35mm height, double wall shape, wall thickness 0.040"
- Interlocking Slats: continuous for the entire door width, must have side locks pressed and/or crimped to the ends of alternating slats.
- Rated thickness: 0.335"
- Weight per square foot: 1.82 lb.

Box Size		4"	5.0"	5.5"	6.5"	7"	8"	9"
Slat Size	35mm Double Wall Extruded							
Axle Dia.	40mm	25.00"	32.00"	45.00"	88.00"	96.00"	124.00"	180.00"
	60mm	20.00"	24.00"	38.00"	82.00"	90.00"	120.00"	144.00"

Description

37mm designed for multi-use. Protection for merchandise, and for residential areas.

Application

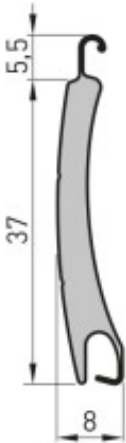
- Energy Savings
- Light Control
- Noise Reduction
- Privacy
- Automated Control

37mm Features and Benefits

- Low profile allows for lower profile housing
- Roll Form Aluminum provides durability
- Foam core provides rigidity, noise reduction and is resistant to impact
- Hail Class Rating of 4

Colors

- White
- Bronze
- Black
- Silver



Housing and Design

90 degree

Operators

- Manual: Spring Assisted
- Motorized: Remote Control, Key Pad, Wall Switch

Motorized Systems:

- Control multiple shutters with master operator
- Keypad availability for minimizing the hassle of additional keys and/or remotes

Slat Profile:

- Material: Roll formed aluminum
- Slat Profile, made of a 3005 H27 aluminum alloy per ASTM aluminum standards which is coil coated with a high quality polyester paint on the outside to insure durability and a poly primer on the inside to provide an adhesive surface for the polyurethane foam core. The foam is injected during the forming process, adding structural composition as well as insulating qualities.
- Interlocking slats, continuous for the entire door width, must have side locks stapled or glued to the ends of alternating slats.
- Rated thickness – .335"
- Weight per square foot – 0.88lbs.

Description

37mm designed for multi-use. Protection for merchandise, and for residential areas.

Application

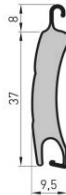
- Security
- Energy Savings
- Light Control
- Noise Reduction
- Privacy
- Automated Control

37mm RC2 Features and Benefits

- Can be used with end retention side locks or standard side locks
- Low profile allows for lower profile housing
- Roll Form Aluminum provides durability
- Cast resin core provides rigidity, noise reduction and is resistant to impact
- Hail Class Rating of 7
- Wind rating of 4
- Noise reduction of +10db
- U-value improvement up to 41%

Colors

- Silver, Black, Bronze, White



Housing and Design

90 degree

Operators

- Manual: Spring Assisted
- Motorized: Remote Control, Key Pad, Wall Switch

Motorized Systems:

- Control multiple shutters with master operator
- Keypad availability for minimizing the hassle of additional keys and/or remotes

Slat Profile:

- Material: Roll formed aluminum
- Slat Profile, made of a 3005 H27 aluminum alloy per ASTM aluminum standards which is coil coated with a high quality polyester paint on the outside to insure durability and a poly primer on the inside to provide an adhesive surface for the cast resin core. The cast resin is injected during the forming process, adding structural composition as well as insulating qualities.
- Interlocking slats, continuous for the entire door width, must have side locks stapled or glued to the ends of alternating slats.
- Rated thickness – .375"

Description

37mm RC3 designed for security and durability

Application

- Security
- Energy Savings
- Light Control
- Noise Reduction
- Privacy
- Automated Control

37mm RC3 Features and Benefits

- Can be used with end retention side locks or standard side locks
- Low profile allows for lower profile housing
- Stainless Steel
- Cast resin core provides rigidity, noise reduction and is resistant to impact
- Hail Class Rating of 7
- Wind rating of 6
- Noise reduction of +10db
- U-value improvement up to 56%

Colors

- Stainless steel

Housing and Design

90 degree

Operators

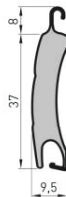
- Manual: Spring Assisted
- Motorized: Remote Control, Key Pad, Wall Switch

Motorized Systems:

- Control multiple shutters with master operator
- Keypad availability for minimizing the hassle of additional keys and/or remotes

Slat Profile:

- Material: Roll formed stainless steel
- Slat Profile, made of a 308 steel. The cast resin is injected during the forming process, adding structural composition as well as insulating qualities.
- Interlocking slats, continuous for the entire door width, must have side locks stapled or glued to the ends of alternating slats.



Description

53mm designed for multi-use. Storm Protection, Hurricane Protection, Retail, Commercial and Residential Security .

Application

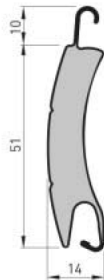
- Hurricane/Storm
- Security
- Energy Savings
- Light Control
- Impact Rated
- Noise Reduction
- Privacy
- Automated Control
- Wind Load Rating 6
- Hail Class 7

53mm Features and Benefits

- Impact rating of "D"
- Holds Miami Dade County Hurricane Rating
- Potential total U factor value improvement of up to 42%
- Screw in end retention side locks
- Low profile allows for lower profile housing
- Roll Form Aluminum provides durability
- Cast resin core provides rigidity, noise reduction and is resistant to impact

Colors

- White
- Silver



Housing and Design

45 degree back and 90 degree front

Operators

- Manual: Spring Assisted
- Motorized: Remote Control, Key Pad, Wall Switch

Motorized Systems:

- Control multiple shutters with master operator
- Control options: wireless keypad, keyed operator, variable switch, as well as other special order options also available.

Slat Profile:

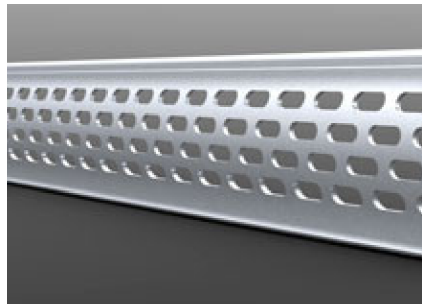
- Material: Roll formed aluminum
- Slat Profile, made of a 3005 H27 aluminum alloy per ASTM aluminum standards which is coil coated with a high quality 2 layer polyester paint on the outside to insure durability and a poly primer on the inside to provide an adhesive surface for the Melamin resin form foam core. The foam is injected during the forming process, adding structural composition as well as insulating qualities.
- Interlocking slats, continuous for the entire door width, must have end retention side locks secured at the ends with two screws of alternating slats.
- Rated thickness – .551"
- Weight per square foot – 23.148 lbs.
- Max Width - 15'
- Max Height - 13.1'



Rolling Doors & Security Shutters

56mm Punch

DEPENDABLE - RELIABLE - SECURE



MATERIAL:



- EXTRUDED ALUMINUM
- OVAL PUNCHED TO PROVIDE LINE OF SIGHT INTO SPACE
- ANODIZED FINISH
- CAN BE CUSTOM POWDER COATED
- RC3 LEVEL SECURITY
- AESTHETICALLY PLEASING PUNCH PATTERN

SYSTEM OPTIONS:



- CAN BE MOTORIZED, TORSION SPRING, OR HAND CRANK OPERATED
- CAN BE USED WITH 2 DIFFERENT TRACK SYSTEMS
- 7 LOCK OPTIONS
- 5 HANDLE OPTIONS

BENEFITS OF ROLLOK SECURITY SHUTTERS



WIDE VARIETY OF APPLICATIONS AND USES



PUNCHED CONSTRUCTION PROVIDES VISIBILITY INTO SPACE



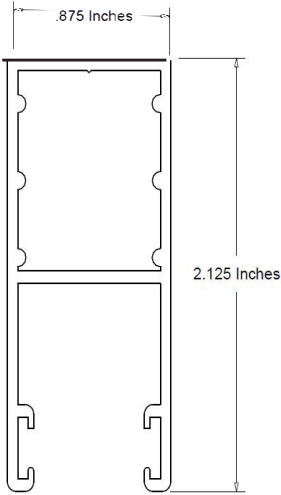
ANODIZED FINISH WITH CUSTOM POWDER COAT OPTIONS



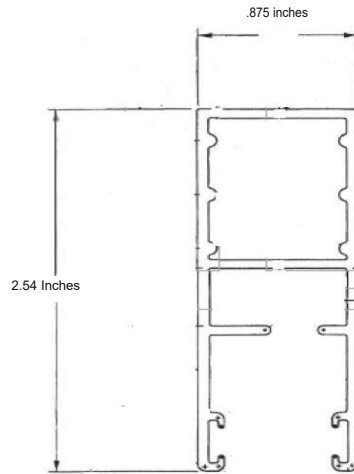
ANTI-BURGLARY PROTECTION OF RC3

Guide Rail Rolling Shutter and Door Applications

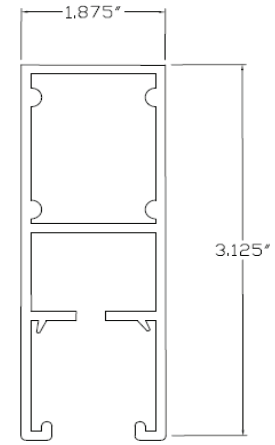
2.125 Guide Rail



2.5 ER Guide Rail

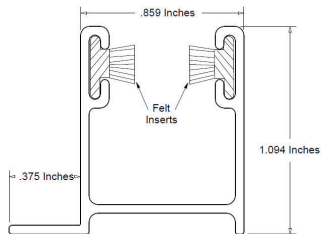


3.125 ER Guide Rail

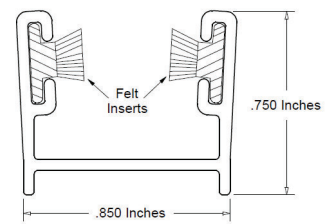


Cabinet and Fixture Applications

Surface Track



Recess Track





BSS1 - Stops

- Sleek Design
- Available in black



BSS2 - Stops

- Functional design
- White in color



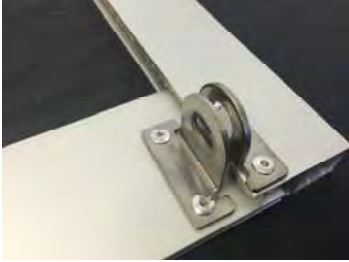
BSS3 - Stops

- Commercial look and durable
- White in color



BSS4 - Stops

- Industrial look and sturdy
- Aluminum with Black in color



L01 - Padlock Eye

- Use any padlock
- Easy to replace lock when needed
- Installed on the bottom slat and guide rail assembly



L02 - Lock with Bars

- Installed on bottom slat
- engages both guide rails when locked
- Rollok's most popular lock



L03 - Slide lock

- Installed on bottom slat
- Great solution for counter shutters to secure from non-public side



L05 - Plunger Lock

- Installed on the guide rail
- locks into a locking slat installed in slat curtain
- Has a removable core



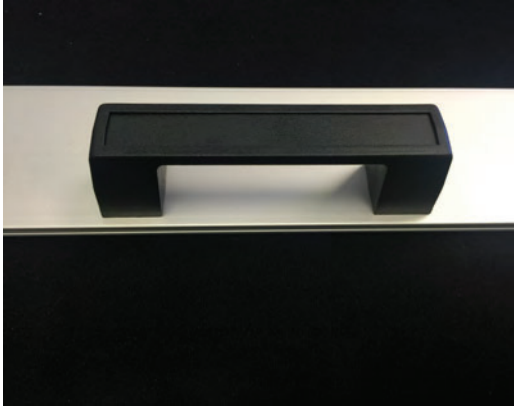
L06 - Code Lock

- Installed on the guide rail
- Operates with a locking cam
- Can hold two codes
- Perfect for area where multiple people need access



L07 - Lock with Bar

- Installed on bottom slat
- Keyless Design
- Great for counter shutters
- Engages both guide rails when locked



H1 Handle

- Commercial look
- Large opening for hand placement
- Black in color



H2 Handle

- Sleek design
- Contemporary look
- Aluminum/silver finish



H3 Handle

- Clean look
- Slim design while providing ample room for hand placement
- Aluminum/silver finish



H4 Handle

- Clean zero profile handle
- Recessed into bottom slat
- Great handle when space is a premium
- Black in color



H5 Handle

- Smooth contemporary design
- Exemplary finish
- Polished Silver in color



MOTOR INFORMATION

INSTALLATION:

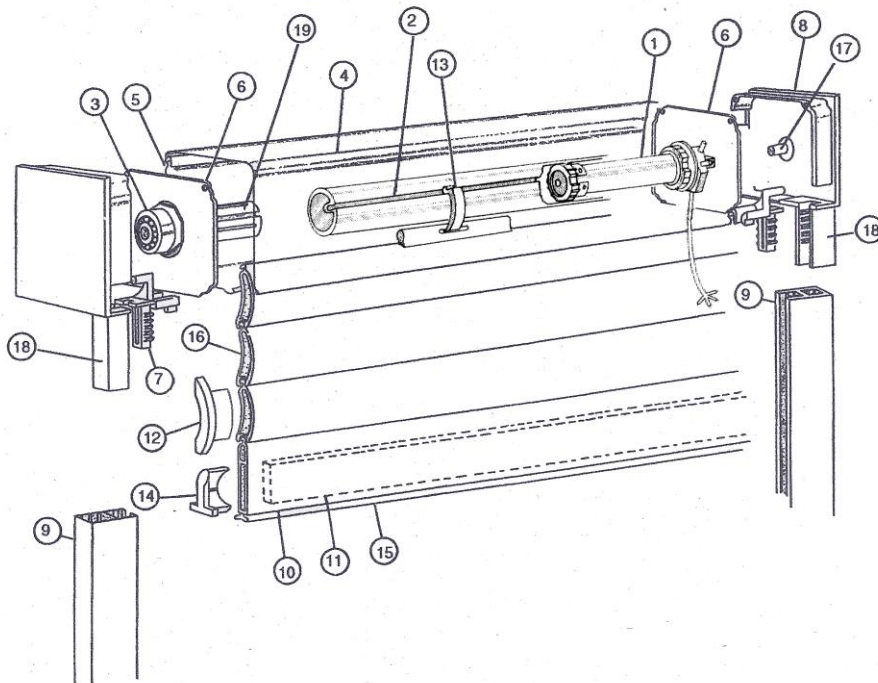
The installation of the motorized unit requires the normal mounting of the side guide rails and the normal inserting of the box into the side guide rails. When using the radio remote control transmitter, the receiver electronics are located inside the motor. The motor lead wire that is stubbed out from the box/ housing will need to be connected to a wall plug. This lead may also be hard wired to a junction box above the ceiling. When using a key switch, hard wiring from the key switch to the motor and hard wiring to the power feed will be required.

POWER: Power requirement is 120 VAC, 2.1 amps.

RADIO FREQUENCY is 433 MHZ.

CONTROLS: The following controls are available:

- (1) Radio Remote
- (2) Key Switch
- (3) Three-position Wall Switch
- (4) Radio keypad



PARTS LIST	
1	Electric Motor
2	Center Axle
3	Insert Bearing
4	Housing Box – Back
5	Housing Box – Front
6	Retainer Plates
7	Entry Guide
8	End Cap
9	Guide Rails
10	Bottom Slat
11	Steel Weight
12	Side Lock
13	Hanging Straps
14	Impact Stop
15	Cushioned Insert
16	Slat
17	End Cap Pivot Post
18	End Cap Ear
19	Axle Insert